

DRC

PZ24-12000008
09/15/2024



Digitally signed by James B. Euell
Date: 2023.08.28
11:18:30 -04'00'

ECO POMPAÑO TOWNHOMES

3225 NE 5TH STREET
POMPAÑO BEACH FLORIDA 33062

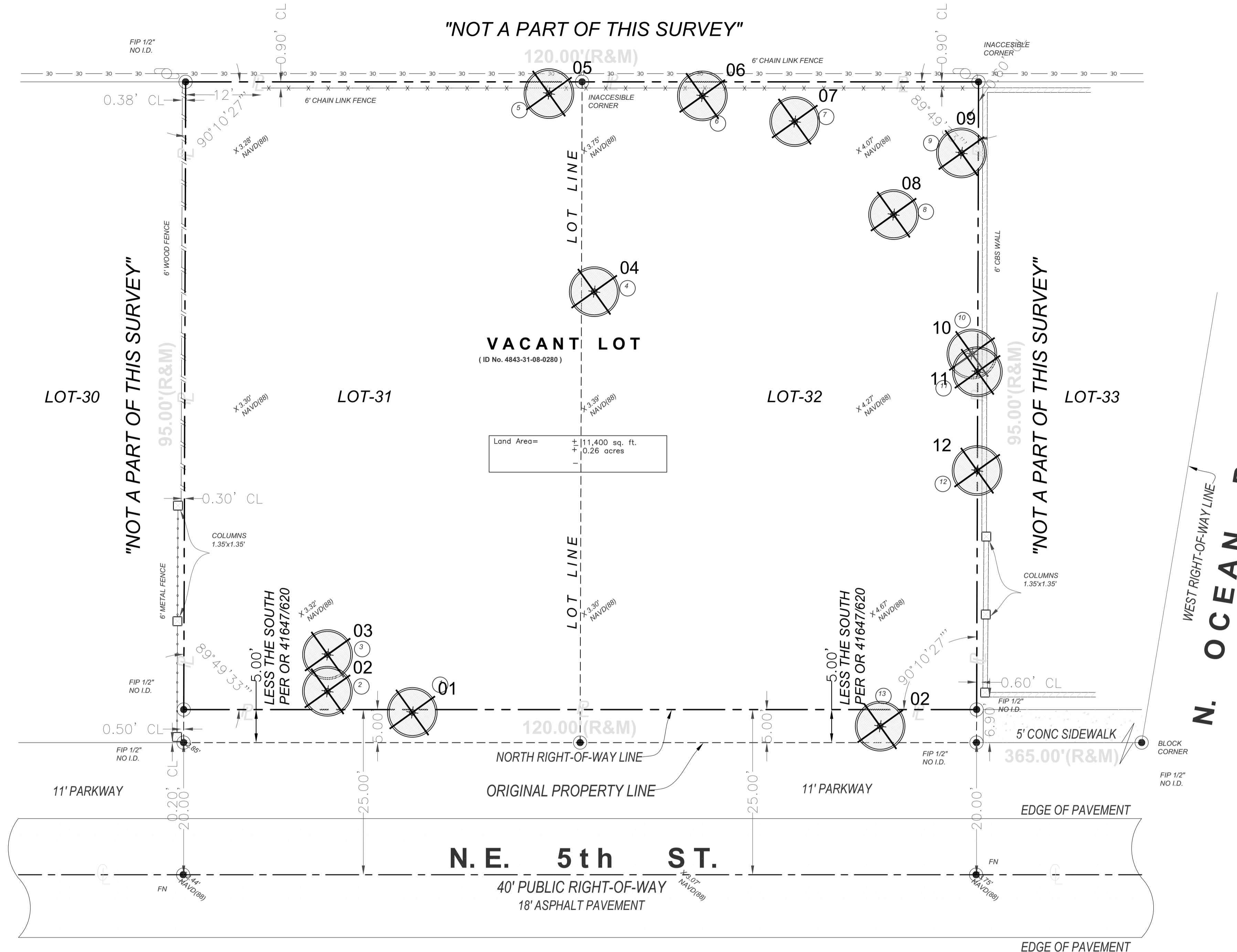
PROJECT NAME & LOCATION:

DISTRIBUTION:	DATE:

DRAWING NAME:
TREE
DISPOSITION
PLAN

DRAWING NUMBER:
PZ24-12000008

PZ24-12000008
5/15/2024



LEGEND

- EXISTING TREE /PALM TO REMAIN
- EXISTING TREE/ PALM TO BE REMOVED
- EXISTING TREE / PALM TO BE RELOCATED

NOTES:

- UNDERGROUND UTILITY LINES SHALL BE ROUTED AROUND THE TREE PROTECTION AREA WHERE POSSIBLE. IF THIS IS NOT POSSIBLE, A TUNNEL MADE BY A TOWER-DRIVEN SOIL PIER PILES AND PILES CLOSE TO TREES SHALL BE DONE BY HAND AND ADJUSTED AS NECESSARY TO AVOID DAMAGE TO MAJOR ROOTS.
- NO DEVELOPMENT OR DEMOLITION ACTIVITY—INCLUDING GRADING, THE OPERATION OR PARKING OF HEAVY EQUIPMENT, OR THE STORAGE OF MATERIALS—SHALL BE ALLOWED WITHIN THE TREE PROTECTION AREA.
- CONTRACTOR TO INSTALL PROTECTIVE FENCE BARRIER AROUND ALL EXISTING TREES TO REMAIN - AT THE START OF THE PROJECT - FENCE TO REMAIN IN PLACE THROUGHOUT THE DURATION OF THE PROJECT.

DRIPLINE

FENCE TO EXTEND TO THE EDGE OF THE DRIPLINE OR MORE WHERE POSSIBLE

THREE ROWS OF SPLIT RAIL FENCING (2"x4") TO BE PLACED AROUND ALL EXISTING TREES TO REMAIN

WOODEN STAKES (2"x4" MIN) OR 5' CONES - TO SUPPORT SPLIT RAIL FENCING

NOTE: BARRIER TO FORM CONTINUOUS FROM AROUND THE TREE OR GROUP OF TREES. SEE LANDSCAPE PLAN FOR LOCATION OF TREES TO REMAIN.

TREE PROTECTION DETAIL

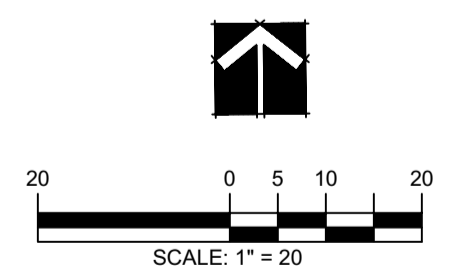
REVISIONS		LANDSCAPE STANDARDS	
BY	DATE	URBAN FORESTRY	TREE PROTECTION DETAIL
TCW	04/2010	CITY OF POMPAÑO BEACH	APPROVED BY:
AS	08/2021		DATE: SEP 2021
		SCALE: N.T.S.	DWG. NO. 104-1

Existing Tree Survey									
KEY	BOTANICAL NAME	COMMON NAME	CALIPER (INCHES)	HEIGHT (FEET)	CANOPY (FEET)	CONDITION	DISPOSITION	VALUE	COMMENTS
1	Casuarina equisetifolia	Australian Pine	20	50	40	Poor	Remove	N/A	Invasive
2	Casuarina equisetifolia	Australian Pine	16	35	30	Poor	Remove	N/A	Invasive
3	Cocos nucifera	Coconut Palm	8	16	15	Fair	Remove		
4	Casuarina equisetifolia	Australian Pine	23	50	40	Poor	Remove	N/A	Invasive
5	Cupaniopsis anacardioides	Carrotwood Tree	7	20	15	Good	Remove		Invasive
6	Bischofia javanica	Bishopwood	30	60	30	Good	Remove		Invasive
7	Sabal Palmetto	Sabal Palm	14	8	8	Good	Remove		
8	Coccoloba uvifera	Seagrape	16	25	25	Fair	Remove		
9	Casuarina equisetifolia	Australian Pine	21	60	40	Poor	Remove	N/A	Invasive
10	Casuarina equisetifolia	Australian Pine	7	30	20	Poor	Remove	N/A	Invasive
11	Casuarina equisetifolia	Australian Pine	7	30	20	Poor	Remove	N/A	Invasive
12	Casuarina equisetifolia	Australian Pine	15	40	30	Poor	Remove	N/A	Invasive
13	Cocos nucifera	Coconut Palm	10	30	15	Fair	Remove		

NOTE: All height and canopy numbers are in feet. Palm height is overall height.

- CITY OF POMPAÑO NOTES:
- Trees must be protected during entire project until completion.
 - *No tree/palm roots or parts shall be cut or damaged due to construction activities on site. If there are any tree/palm root conflicts, contact Urban Forestry Staff for assistance 954-786-452P

PALMS AND TREES MITIGATION				
3 non specimen Coconut palms with a diameter of 32" to be removed. The proposed landscape plan has 3 Additional Sabal palms to cover the required mitigation.				
1 non specimen tree to be removed. The proposed landscape plan has 6 additional trees to cover the required mitigation.				
Please see tree replacement breakdown below:				
QTY				
2	Coccoloba diversifolia / Pigeon Plum	3 Inches each	9 Inches	
4	Tabebuia heterophylla	3 Inches each	9 Inches	
3	Sabal Palmetto / Sabal Palm	12 Inches each	36 Inches	
TOTAL			54 Inches	



811

KNOW WHAT'S BELOW
ALWAYS CALL 811
BEFORE YOU DIG

It's fast, it's free, it's the law.
Call 811 two business days
before digging